

# **Resolving the psyllid tree of life: Phylogenomic analyses of the superfamily**

## **Psylloidea (Hemiptera)**

DIANA M. PERCY<sup>\*1,2</sup>, ALEX CRAMPTON-PLATT<sup>1,3</sup>, SAEMUNDUR SVEINSSON<sup>4</sup>, ALAN  
R. LEMMON<sup>5</sup>, EMILY MORIARTY LEMMON<sup>6</sup>, DAVID OUVRARD<sup>1</sup>, DANIEL  
BURCKHARDT<sup>7</sup>

<sup>1</sup>Department of Life Sciences, Natural History Museum, London, United Kingdom.

<sup>2</sup>Department of Botany, Faculty of Science, University of British Columbia, Vancouver, Canada.

<sup>3</sup>Department of Genetics, Evolution and Environment, University College London, London,  
United Kingdom.

<sup>4</sup>Agricultural University of Iceland, Hvanneyri, Iceland.

<sup>5</sup>Department of Scientific Computing, Florida State University, Tallahassee, USA.

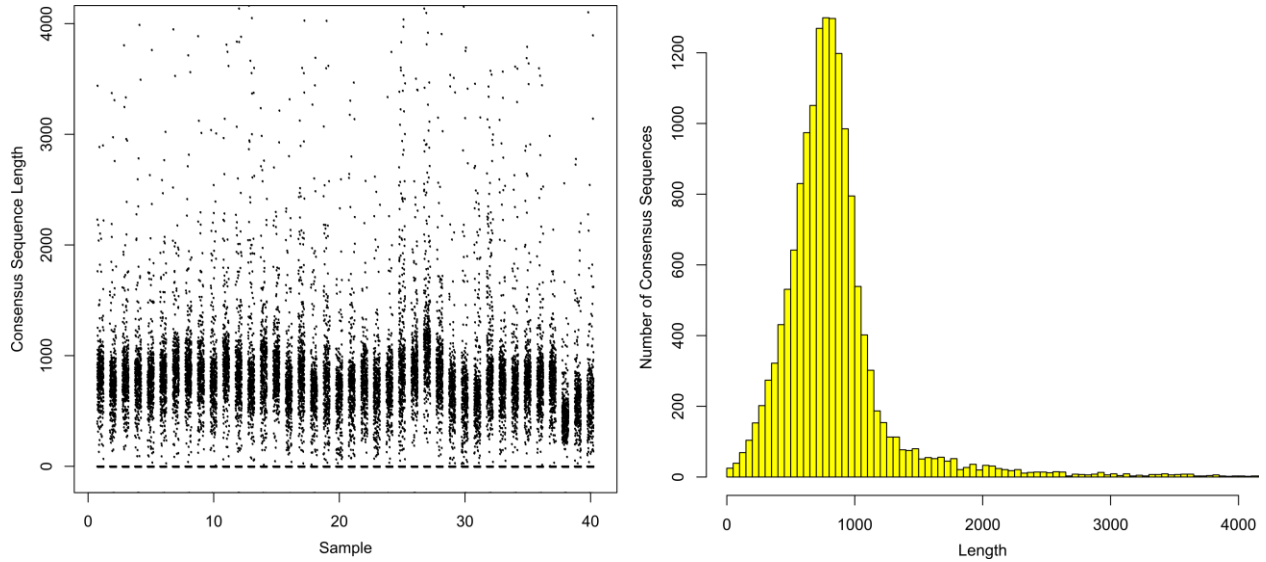
<sup>6</sup>Department of Biological Science, Florida State University, Tallahassee, USA.

<sup>7</sup>Naturhistorisches Museum, Basel, Switzerland.

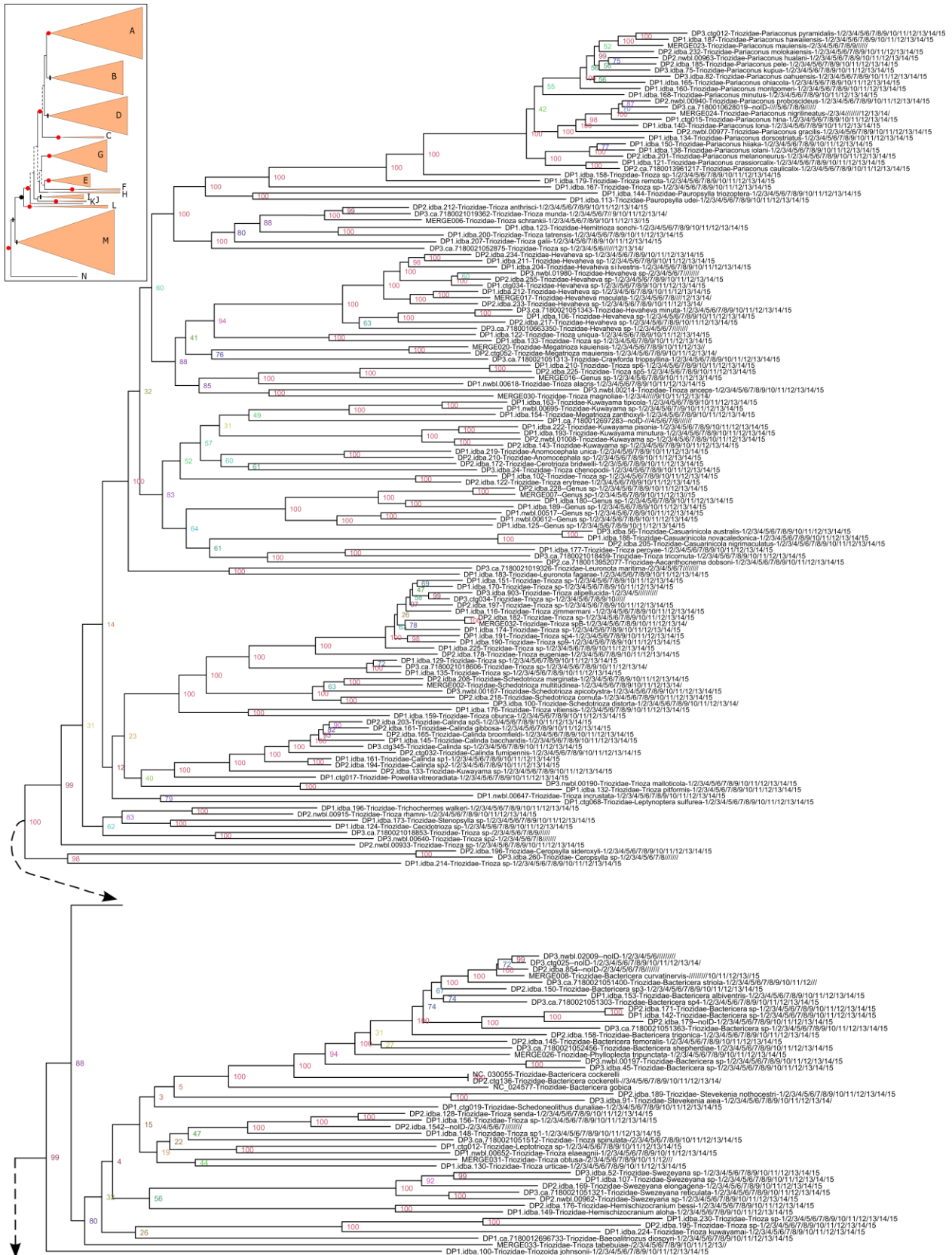
\*Corresponding author: d.percy@nhm.ac.uk

## **Supplementary material**

**Figure S1.** Assembly results for the nuclear genome loci using the AHE method (read and assembly details given in Table S10).



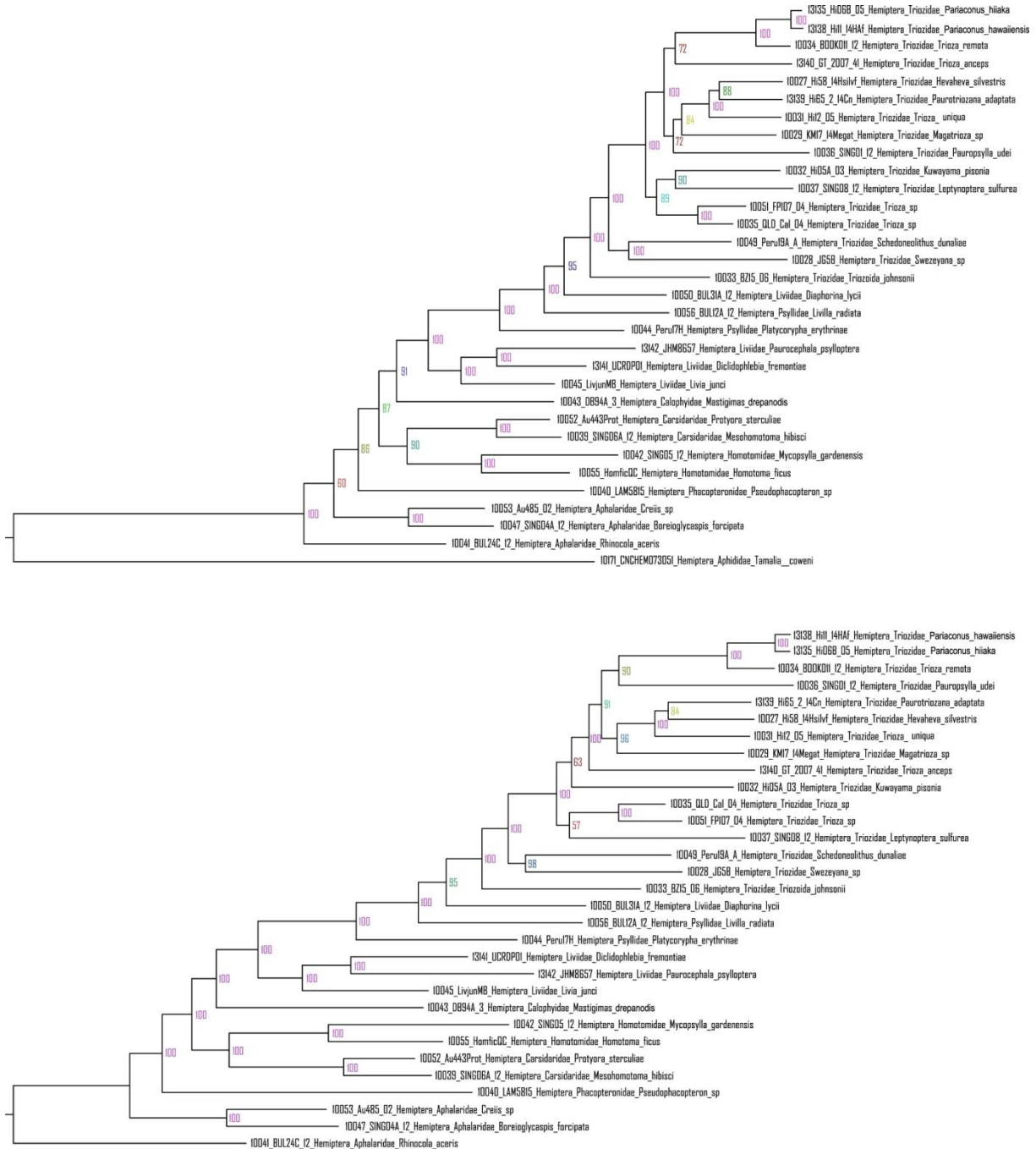
**Figure S2.** Best ML tree generated using the all taxa, all nucleotide mitogenome data set with outgroups (not shown) given in Tables S1 and S3. Terminal label information includes: pool number, assembly code, family, species, and loci recovered (nad2/cox1/cox2/atp8/atp6/cox3/nad3/nad5/nad4/nad4l/nad6/cytb/nad1/16S/12S). Inset cartoon shows relative part of Figure 2. The “PTCD clade” refers to a major clade incorporating three families, Psyllidae, Triozidae, Calophyidae sensu stricto (i.e. Calophyinae), and the genus *Diaphorina*.







**Figure S3.** Best ML trees generated using the nuclear anchored hybrid enrichment (AHE) data set run either with aphid outgroup (above), or without the aphid but rooted manually using the same basal Group JJ (Aphalaridae) (below). Terminal label information includes: assembly code, sample code, order, family, and species (see Table S5).





**Figure S4.** Best ML tree generated using the combined mitochondrial-nuclear data set. Terminal label information includes: genus, species, family, and data combined: mtg (mitochondrial), 18S (nuclear rRNA), AHE (anchored hybrid enrichment) (see Table S6).

